

Benefits of School, Family and Community Partnerships

- Anne Davis, Internal Coach, Illini Elementary Grant District #110
- Travis Klein, Principal Illini Elementary, Grant District #110
- Sandy Crawford, Social Worker, Alton CUSD # 11
- Susan Ditch, PBIS Network Technical Assistant Coordinator

Grant District #110

■ District Demographics

District Enrollment **744**
Schools in District **2**
All Subjects Meets and Exceeds **80%**
Low Income **39%**
Race **White 54 %**
Black 36 %
Multiracial 6%
Hispanic 4%
Mobility rate **16%**
Attendance Rate **95%**

Parental Involvement 100%
(based on P/T Conferences)

■ What Research Tells Us

- Higher test scores
- Better grades
- Better attendance
- Higher levels of homework completion
- More positive student motivation
- Improved attitudes about school work

- "The most accurate predictor of a student's achievement in school is not income or social status, but the extent to which the student's family is able to create a home environment that encourages learning and become involved in their children's education at school and in the community."
(Dr. Joyce Epstein)

• Best-Practice Model Created by Dr. Joyce Epstein and Adapted by Seattle Public Schools
• Durrick, Miao, & Shippin. (2004) *A Model for Involving Parents of Children with Learning and Behavior Problems in the Schools: Preventing School Failure* 48(3), 28-33

■ How we reached the point of need

- ✓ Volunteering
- ✓ Support Learning at Home
- Create a Welcoming Environment
- Parent Education
- Shared Decision-Making
- Resource for whole community

Standards identified by the National PTA build on six types of parent involvement identified by Dr. Joyce L. Epstein of the Center on School, Family, and Community Partnerships at Johns Hopkins University


■ How we solved the problem

- **Show off student work**
Organize a quick Performance
- **Food**
People will show up for a free meal
- **Free/ Low Cost**
Principals Account
Area businesses as a sponsor
Fundraising
- **Babysitting**
Involve the MS National Honors Society kids; they will benefit from community service opportunities

■ Illini Successes


- Parent Breakfasts
- Family Game Night
- Fall Festival
- Family Reading Night
- Movie Night/PTO
- Thank You Dinner





■ Benefits In Our Building


- Stronger PTO
- Opportunity for positive family time
- Form relationships among families in the district
- Positive contact between parents and teachers
- Positive contact between parents and administration/board members
- Increased parent volunteers
- More opportunities to showcase student achievement
- Communication improved between school and parents



■ Attendance Data for Parent Involvement

Enrollment 2010-2011 **401**
 Enrollment 2011-2012 **361**

- Parent Breakfast **2010-11 368 (K-4)**
2011-12 116 (3-4)
- Movie Night **avg. 60**
- Fall Festival **200+**
- Game Night **173**
- Family Reading Night **250**
- Thank You Dinner **76**



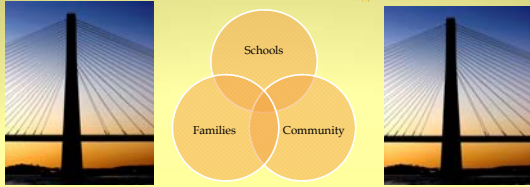
■ Process Time to Debrief Ideas

- Talk with your shoulder partner for a couple of minutes about some of the ideas presented here on parent and family engagement.
- Reflect on how you can bring this information back to your building/district?

Contact Information

- Travis Klein, Principal at Illini Elementary klein.t@dist110.com
- Anne Davis, Social Worker and Internal Coach, Illini Elementary davis.a@dist110.com

Benefits of School, Family Community Partnerships







- Four year Federal grant- 3.6 million
- Core Management Team
- Required Partners: Law Enforcement, Juvenile Justice, Mental Health



Partnerships



- Law Enforcement
- Mental Health
- Juvenile Justice
- Boys & Girls Club
- YWCA
- Faith-based
- Community College
- Coalitions (Drug Free Alton, Weed & Seed)
- Alton Park & Rec
- Child Welfare (DCFS)
- 100 Black Men
- Hayner Public Library
- Head Start
- Oasis Intergenerational Tutoring
- County Health Dept.
- Newspaper, radio
- Hospitals
- Community Center

Communications Partnerships Coming Together for a Greater Community



Building partnerships involves teaming people with new or different ideas...

<http://youtu.be/yJzOiemCluY>

Challenges to Partnerships

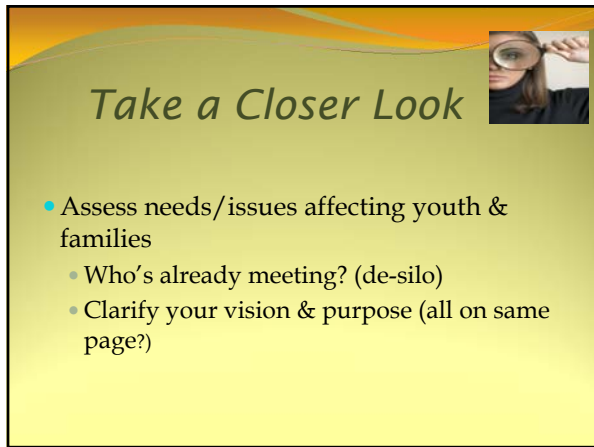
- Time Constraints
- Resources
- Turnover/change in leadership
- Competition for scarce funds
- History/past turf experiences
- Language/jargon
- Differing missions/perspectives
- Confusion - multiple stakeholders

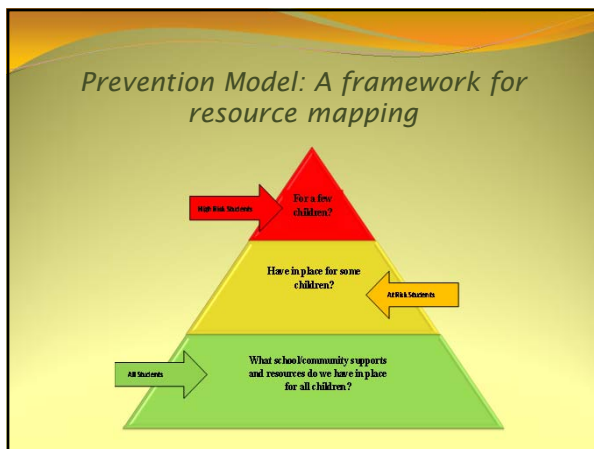


Benefits to Partnerships

- Systems communication- familiarity
- Joint problem solving - addressed heroin overdoses
- Cross Training - restorative justice
- Find new ways to collaborate
- Avoid duplication of effort/services
- Coordination of resources
- Positioning for funding







Building Partnerships- It's Worth the Time



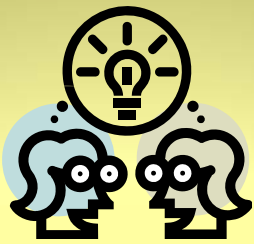
Building a Partnership

- Leadership structure w/ partners you need (not just who's available)
- Stakeholder commitments
- Culturally responsive
- Decision making process - consensus
- Communication design across systems
- Shared fiscal responsibilities (to braid funding, identify resources)
- Plan from the start (sustainability)
- Use data/evaluation to measure progress

Why Systems Change?

- Requires Collaborative Bridge Building & Time
- Policies need to support collaboration
- Shift in thinking:
 - Individual responsibility > shared
 - Brief contact > ongoing, sustained
 - Conventional contact > blog, web, home visit, community-centered
- Ex: Merge of Truancy Review Board/LAN

Share & compare



Report Out & Questions



Contact Information

- Sandy Crawford, MSW

Project Director, Safe
Schools/Healthy Students
Initiative, Alton CUSD #11
scrawford@altonschools.org

Resources

- Center on School, Family & Community Partnerships:
<http://www.csos.jhu.edu/p2000/center.htm>
- Working Systemically in Action: Engaging Family & Community (PDF download free):
<http://www.sedl.org/pubs/catalog/items/family126.html>
- Working Together Toolkit:
<http://www.cesdp.nmhu.edu/>

Before you leave the session...

- Take a moment to reflect on the session
- Record your thoughts in the back of your program booklet
- These notes will assist you in completing the online evaluation after the conference
- Your comments are valued and assist in developing future conference sessions
